



## features

- 50 Ton (45,4 mton) Capacity
- 4-Section 110' (33,5 m) Proportional Boom
- 4-Section 96' (29,3 m) Proportional Boom
- 2-Section 32' (9,8 m) To 49' (14,9 m) Telescopic Offset Jib (15°, 30°) Option; equipped with Jib Jack
- 164' (50,1 m) Maximum Tip Height with Telescopic Jib
- 117' (35,6 m) Maximum Main Boom Tip Height
- Self-Lubricating Boom Slider Pads
- Two Speed Planetary Grooved Drum Hoist With Negative Draft Flange and Rope Tensioner
- Auxiliary Hoist Option
- Hoist Drum Rotation Indicator
- Cab Enclosed Ride Around Operator Control Station with Diesel Heater Standard, Air Conditioner Option Available
- Pilot Operated Crane Controls
- Hydraulic System Pressure Gauge
- Free Swing with Accu-Swing Control
- Continuous Rotation
- 360° Work Area
- ROCSolid Outriggers feature Radio Remote Outrigger Controls, Audible Outrigger Motion Alarm
- Retracted, Intermediate And Fully Extended Outrigger Load Charts
- Load Chart On Tires Over The Rear
- Load Moment Indicator with Digital Display, CANbus system interface, Overload Shutdown and Internal Boom Length Cable
- Radio Anti-Two-Block System
- Rugged, Weatherproof, Automotive Style Electrical System
- Hydraulic Oil Cooler
- Clamp-On Mounting
- Design Meets ANSI B30.5 Recommendations
- Manitex UPTIME Comprehensive Support

## series 5002

BOOM TRUCKS



## product guide

# series 5002

## GENERAL SPECIFICATIONS

### BOOM

Inverted T-cross section designed for optimum strength to weight ratio; 4-section telescoping type, extended and retracted proportionally by a double-acting hydraulic cylinder and a cable-crowd system. Fitted with easily replaceable self-lubricating wear pads for smooth operation.

**50110S** – 4-Section 34' (10,4 m) to 110' (33,5 m)

**5096S** – 4-Section 30' 6" (9,3 m) to 96' (29,3 m)

**Quick Reeve Boom Point** – Fitted with two upper and four lower high-density nylon load sheaves mounted on heavy-duty roller bearings. Removable pin-type rope guards.

**Boom Elevation** – Double-acting hydraulic cylinder. Working range from 5° below horizontal to 75° above.

**Load Hook** – 5-ton (4,5 mton) capacity hook with heavy-duty swivel and weight is provided for single-line operation.

**Jib** (Option) - Inverted T-cross section designed for optimum strength to weight ratio. 2-Section 32' (9,8 m) To 49' (14,9 m), Offsetting (0°, 15°, 30°); manually extended. Features **Jib Jack** and stow bracket design for one-man operations. Compatible with models 5096S and 50110S.

### HOIST

Planetary reducer with wet multi-disc spring applied, hydraulically released internal brake and grooved drum; negative draft angle on drum flange and load line tension roller virtually eliminates load line stacking while spooling. High efficiency two speed hydraulic motor equipped with patented brake valve for precise lowering.

**Main Hoist** – Maximum theoretical line speed 453 fpm (138 mpm); maximum theoretical bottom-layer line pull 13396 lb (6 076 kg).

**Auxiliary Hoist** (Option) - Same as Main

**Wire Rope** – 400' (122 m), 5/8" (16 mm) diameter. Low Torque type; a designed balance between rope lay and strand lay offers characteristics similar to those attributed to rotation resistant ropes at a 3.5:1 safety design factor.

### SWING SYSTEM

Continuous rotation, free swing system assists in tandem lifting and centering of boom over loads. Externally mounted, double-reduction planetary gearbox driven by hydraulic motor. Equipped with a dual brake system; spring-applied hydraulically-released Parking Brake and a foot actuated Dynamic Service brake. Ball-bearing swing circle with external gear.

### OUTRIGGERS

Out-and-down style outriggers, operated independently for precise leveling. Fully extended, intermediate extension and fully retracted outrigger beam positions. Bubble levels located in operator cab and near outrigger manual controls.

Maximum outrigger spread 23' 3" (7,1 m), Intermediate outrigger spread 15' 5" (4,7 m), 22" (559 mm) diameter floats.

**Front Bumper Stabilizer** - Single stabilizer assembly mounted at the front of the truck (required); maximum float load is controlled by preset counterbalance valve to prevent overloading the stabilizer. This feature requires truck front frame extensions, consult factory.

### MOUNTING

Lower frame is mounted to chassis by threaded rods and clamp plates. No welding, drilling, or bolting to truck frame is required.

**Lower Frame** – Torsionally resistant, rigid 4-plate design with integrated outriggers and pedestal.

**Rear Underride Protection** – Standard on factory-mounted cranes. Fabricated structure mounted under rear of crane. Complies with Bureau Motor Carrier Safety Standard 393.86.

**Boom Rest** – Heavy-duty fabrication. Easily removed to simplify loading and unloading truck deck.

### CONTROL SYSTEM

Single cab enclosed operator platform and seat mounted to turret. Four "pilot operated" single-axis crane controls provide precise metering and multifunction capability; winch control fitted with hoist drum rotation indicator (**HDRI**). Controls are arranged in accordance with ANSI B30.5 standards.

The operator station also includes engine start/stop, air foot throttle, signal horn, load moment indicator display, view of boom angle indicator, load chart, range diagram and the Manitex ACCUSwing control that allows the operator to adjust swing speed up to a maximum of 2.0 rpm.

### CAB

Standard features include a diesel heater, top hatch with electric wiper and locking latches, front electric two-speed wiper, spray washer, fuse block, operator cooling fan, dome light, slider side and rear windows, two position side door with keyed outside latch. Cab may be upgraded to include a hydraulic air conditioning unit.

### HYDRAULICS

**Hydraulic System** – A 3-section pump direct-mounted to power take-off on truck transmission provides 41.7 gpm (158 lpm) to the hoist, 28 gpm (106 lpm) to the boom hoist and telescope circuit, and 12 gpm (45 lpm) to the swing and outrigger circuit. 115-gallon (435-liter) baffled reservoir includes suction ball valve with strainer and two 25-micron filters in the return line. Use of SAE O-ring and face seal O-ring hydraulic fittings throughout system.

**Hydraulic Cylinders** – All load-holding cylinders are equipped with integral holding valves.

### WARNING SYSTEMS

**Load Moment Indicator** – CANbus interface system maximize expansion capabilities. Senses boom hoist cylinder pressure, boom length and boom angle. Audio-visual warning indicates overload conditions and overload shutoff feature prevents continuing overload. Operator can access all relative crane configuration and load conditions via display at the operator station. For added reliability, the LMI system features an internal boom length sensing cable.

**Radio Anti-Two-Block System** – Audible warning and shutoff functions prevent hook from contacting boom point. Switch is potted to ensure reliability.

**Back-Up Alarm** – Supplied on factory-mounted cranes, electronic audible motion alarm activated when truck transmission is in reverse gear.

### GENERAL

**Electrical** – State-of-the-art, weather-resistant components throughout; automotive style electrical system for easy installation. System is designed to withstand high pressure washing and varying climates.

**Design/Welding** – Design conforms to ANSI B30.5. Welding conforms to AWS D1.1. Tested to SAE 1063 and SAE 765.

**Manuals** – Operator/maintenance and parts manuals depict correct crane operation, maintenance procedures and parts listing.

**Warranty** – 12-month warranty covers parts and labor resulting from defects in material and workmanship.

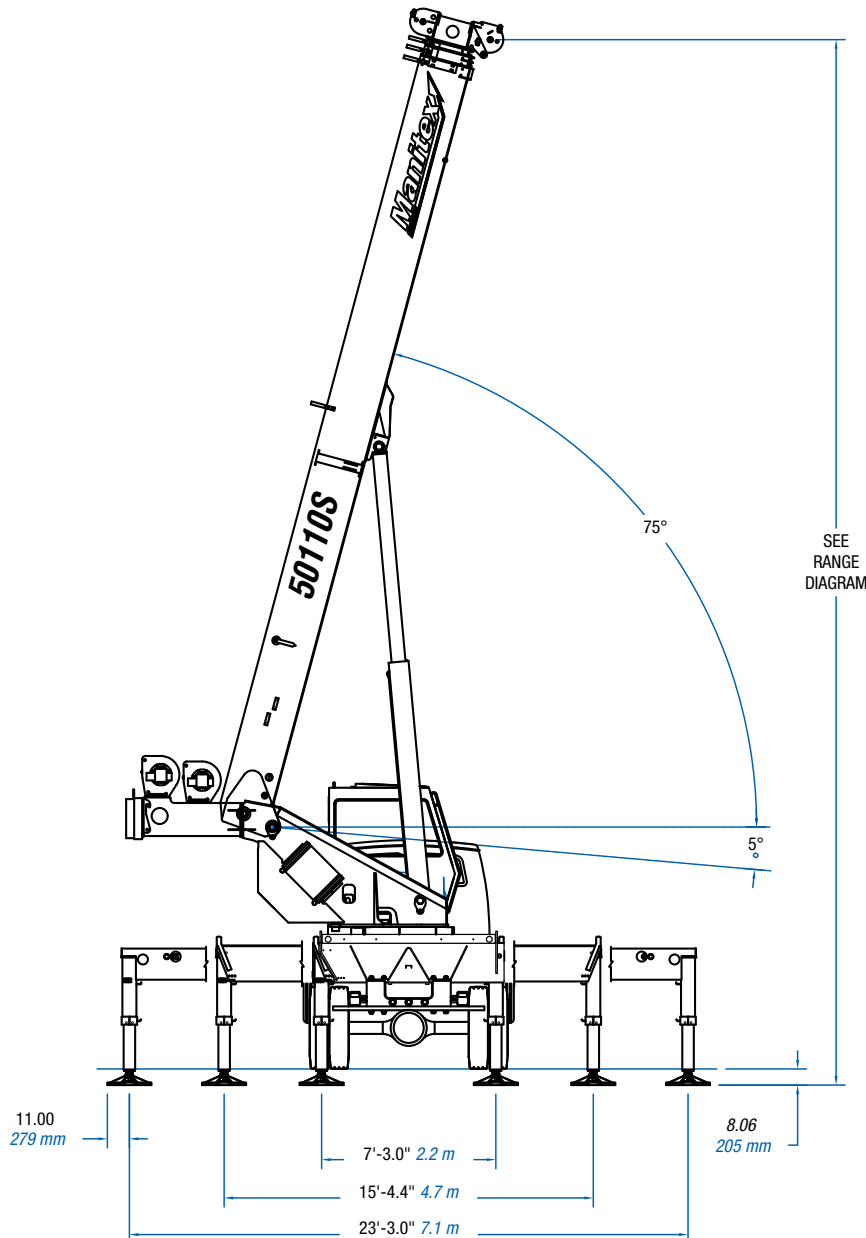
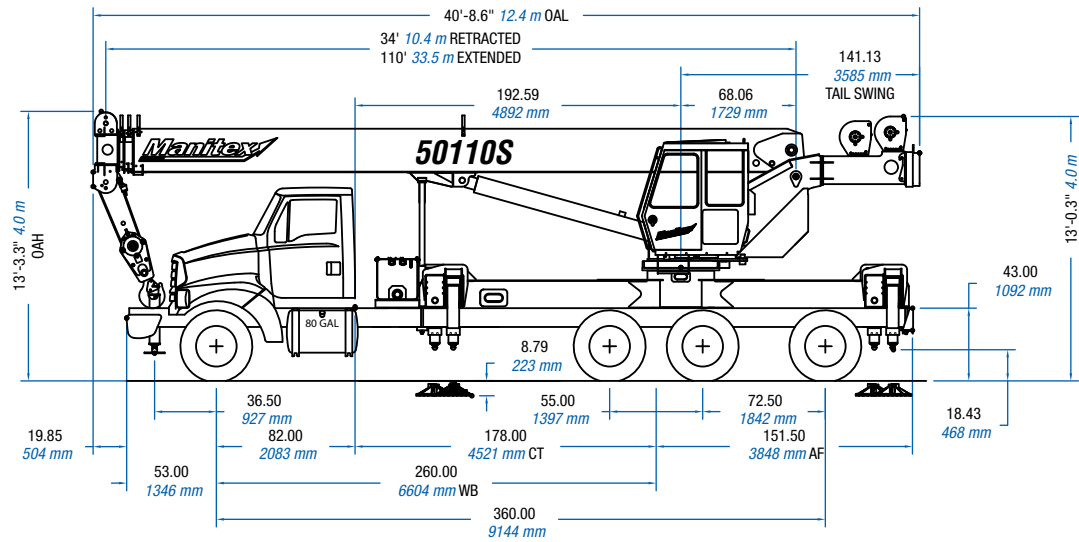
\* In order to ensure continuous improvement, specifications may change without notice.

MAXIMUM TIP HEIGHT	5096S	50110S
Configuration	Boom 96' 29,3 m	Boom 110' 33,5 m
Extended Boom	103' 10" 31,6 m	117' 35,6 m
Fixed or Retracted Jib	134' 9" 41,1 m	148' 45,0 m
Extended Jib	151' 2" 46,1 m	164' 50,1 m

CHASSIS DATA	5096S	50110S
Wheelbase (WB)	246" 6 248 mm	260" 6 604 mm
Cab to Tandem (CT)	182" 4 622 mm	178" 4 521 mm
Cab to End of Frame (EOF)	323" 8 204 mm	330" 8 382 mm
Frame Section Modulus	27.0 in <sup>3</sup> 120,000 psi 827 371 kPa	27.0 in <sup>3</sup> 120,000 psi 827 371 kPa
Front Axle Gross Weight Rating	20,000 lb 9 071 kg	20,000 lb 9 071 kg
Rear Axle Gross Weight Rating	40,000 lb 18 143 kg	40,000 lb 18 143 kg
Minimum Truck Axle Weight - Front*	9,100 lb 4 127 kg	9,000 lb 4 082 kg
Minimum Truck Axle Weight - Back*	11,150 lb 5 057 kg	10,600 lb 4 808 kg
Nominal Frame Width	34" 864 mm	34" 864 mm
<p>Chassis data is minimum general requirements-not for engineering. Actual dimensions and truck data will depend on truck selection and axle configuration. *Minimum chassis weight is required to meet 85% stability requirements.</p>		

WEIGHTS	5096S	50110S
Crane (Includes Cab and Platforms)	37,535 lb 17 026 kg	38,838 lb 17 617 kg
Cab	575 lb 261 kg	575 lb 261 kg
Aluminum Platforms	542 lb 246 kg	542 lb 246 kg
32' (9,72 m) to 49' (14,94 m) Telescopic Jib	1,870 lb 848 kg	1,870 lb 848 kg

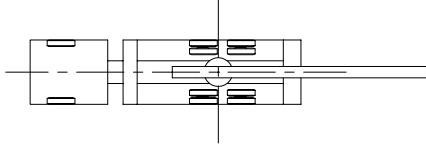
OAH	Overall Height
CT	Cab to Tandem
CA	Cab to Axle
WB	Wheel Base
OAL	Overall Length
BBC	Bumper to Back of Cab
AF	Afterframe
EOF	End Of Frame



## AREA OF OPERATIONS

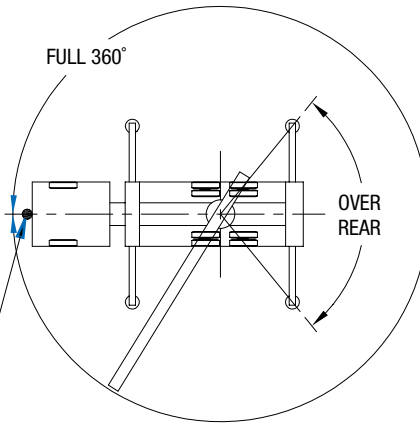
### ON TIRES

WHEN LIFTING ON TIRES, THE BOOM MUST BE CENTERED OVER THE REAR OF THE CRANE WITH THE SWING BRAKE AND THE HOUSELOCK ENGAGED.



### ON OUTRIGGERS

FULL 360°



THE FRONT BUMPER STABILIZER MUST BE SET IN ACCORDANCE TO THE OPERATORS MANUAL BEFORE WORKING IN THE "FULL 360°" AREA.

## DEDUCTIONS

Auxiliary Block	<b>50 lb</b> <b>22,72 kg</b>
Rooster Sheave	<b>70 lb</b> <b>31,75 kg</b>
Lifting from Main Boom with Jib Stowed or Erected	See load rating chart
Overhaul Ball	See manufacturer nameplate
Load Block	See manufacturer nameplate

## ALLOWABLE LINE PULL

1 PART LINE	2 PART LINE	3 PART LINE	4 PART LINE	5 PART LINE	6 PART LINE	7 PART LINE	8 PART LINE	9 PART LINE	10 PART LINE	WARNING
										<p><b>Anti-two-block system must be in good operating condition before operating crane.</b></p> <p><b>Refer to the owner's manual.</b></p> <p><b>Keep at least 3 wraps of load line on the drum at all times.</b></p>
<b>10,000 lb</b> <b>4 536 kg</b>	<b>20,000 lb</b> <b>9 072 kg</b>	<b>30,000 lb</b> <b>13 608 kg</b>	<b>40,000 lb</b> <b>18 144 kg</b>	<b>50,000 lb</b> <b>22 680 kg</b>	<b>60,000 lb</b> <b>27 216 kg</b>	<b>70,000 lb</b> <b>31 751 kg</b>	<b>80,000 lb</b> <b>36 287 kg</b>	<b>90,000 lb</b> <b>40 823 kg</b>	<b>100,000 lb</b> <b>45 359 kg</b>	<p>5/8" XLT4 LOW-TORQUE (3.5:1 SF) - 35,000 LBS MIN BREAKING STRENGTH</p>

## BOOM AND JIB COMBINATIONS

5096S

96'

4 Section Boom

32' - 42' 2 - Section Jib



50110S

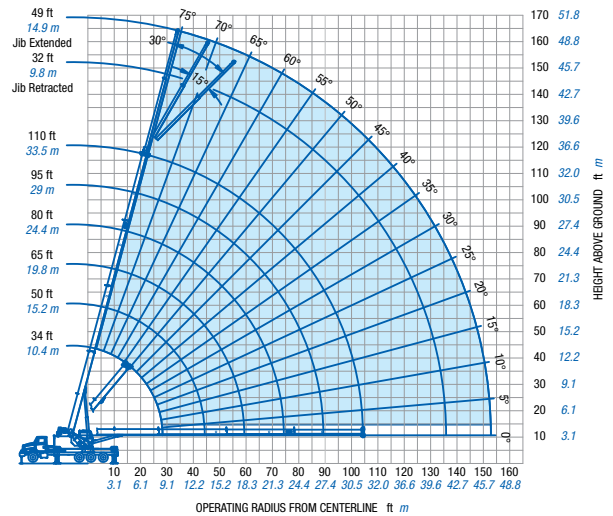
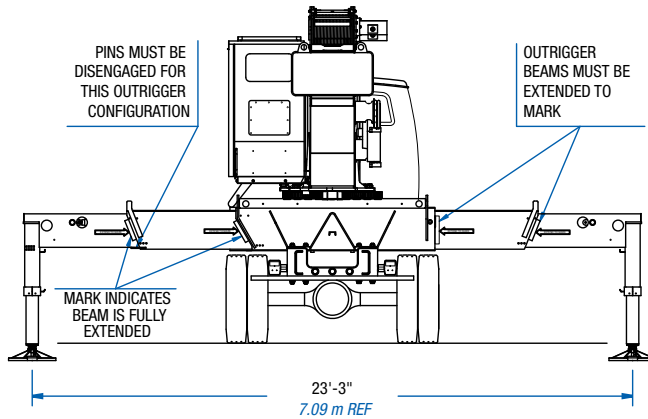
110'

4 Section Boom

32' - 42' 2 - Section Jib



# USE THIS CHART ONLY WHEN ALL OUTRIGGER BEAMS ARE FULLY EXTENDED



## FULLY EXTENDED OUTRIGGER SPREAD: MODEL 50110S

### MAIN BOOM LOAD RATINGS

Load Radius	Boom Length 34 ft				Boom Length 50 ft (A)				Boom Length 65 ft (B)			
	Loaded Boom Angle	Code 1		Code 3	Loaded Boom Angle	Code 1		Code 3	Loaded Boom Angle	Code 1		Code 3
		Over Rear	Full 360°			Over Rear	Full 360°			Over Rear	Full 360°	
Feet Meters	°	lb kg	lb kg	°	lb kg	lb kg	lb kg	°	lb kg	lb kg	lb kg	°
6 1,83	71	100000 45 360	100000 45 360									
8 2,44	67.5	88100 39 962	88100 39 962									
10 3,05	63.5	77900 35 335	77900 35 335	73	51000 23 134	51000 23 134						
12 3,66	60	69900 31 707	69900 31 707	70.5	51000 23 134	51000 23 134						
15 4,57	53.5	60400 27 397	60400 27 397	67	51000 23 134	51000 23 134			73	40000 18 144	40000 18 144	
20 6,10	42	46100 20 911	46100 20 911	60.5	46400 21 047	46400 21 047			68.5	38810 17 604	38810 17 604	
25 7,62	26.5	35800 16 239	35670 16 180	53.5	36600 16 602	36600 16 602			63.5	33150 15 037	33150 15 037	
30 9,14				45.5	29670 13 458	25590 11 608			58.5	29000 13 154	26150 11 862	
35 10,67				36.5	23130 10 492	18980 8 609			53	23610 10 709	19500 8 845	
40 12,19				25	18360 8 328	14680 6 659			47	18850 8 550	15190 6 890	
45 13,71									40.5	15440 7 004	12160 5 516	
50 15,24									32.5	12870 5 838	9920 4 500	
55 16,76									22.5	10860 4 926	8170 3 706	
		1150 lbs 521 kg			780 lbs 353 kg					600 lbs 272 kg		
		2940 lbs 1 333 kg			2650 lbs 1202 kg					2510 lbs 1138 kg		
		3320 lbs 1 505 kg			2910 lbs 1319 kg					2710 lbs 1229 kg		

Deductions for Jib From Main Boom Capacities

Stowed Jib  
Erected Jib (Retracted)  
Erected Jib (Extended)

Load Radius	Boom Length 80 ft (C)				Boom Length 96 ft (D)				Boom Length 110 ft (E)			
	Loaded Boom Angle	Code 1		Code 3	Loaded Boom Angle	Code 1		Code 3	Loaded Boom Angle	Code 1		Code 3
		Over Rear	Full 360°			Over Rear	Full 360°			Over Rear	Full 360°	
Feet Meters	°	lb kg	lb kg	°	lb kg	lb kg	lb kg	°	lb kg	lb kg	lb kg	°
20 6,10	73.5	28230 12 805	28230 12 805									
25 7,62	69.5	24350 11 045	24350 11 045	73.5	20000 9 071	20000 9 071						
30 9,14	65.5	21280 9 653	21280 9 653	70.5	18680 8 473	18680 8 473			74	15500 7 030	15500 7 030	
35 10,67	61.5	19000 8 618	19000 8 618	67.5	16580 7 520	16580 7 520			71.5	14660 6 649	14660 6 649	
40 12,19	57.5	16870 7 652	15470 7 017	64	14820 6 722	14820 6 722			69	13270 6 019	13270 6 019	
45 13,71	53	15120 6 858	12440 5 643	60.5	13330 6 046	12610 5 719			66	11960 5 424	11960 5 424	
50 15,24	48	13130 5 956	10190 4 622	57	12050 5 465	10360 4 699			63	10850 4 921	10480 4 753	
55 16,76	43	11140 5 053	8460 3 837	53	10920 4 953	8620 3 909			60	9950 4 513	8740 3 964	
60 18,29	37	9540 4 327	7080 3 211	49	9700 4 399	7250 3 288			56.5	9210 4 177	7360 3 338	
65 19,81	30	8220 3 729	5950 2 699	44.5	8390 3 805	6120 2 775			53.5	8410 3 814	6240 2 830	
70 21,34	21	7110 3 225	5010 2 273	40	7290 3 306	5190 2 354			50	7400 3 356	5300 2 404	
75 22,86				34.5	6360 2 884	4410 2 000			46	6470 2 934	4520 2 050	
80 24,38				28	5560 2 521	3730 1 691			42	5670 2 571	3850 1 746	
85 25,91				20	4860 2 204	3140 1 424			37.5	4980 2 258	3260 1 478	
90 27,43									33	4380 1 986	2750 1 247	
95 28,98									27	3840 1 741	2300 1 043	
100 30,48									19	3350 1 519	1900 861	
		490 lbs 222 kg			420 lbs 191 kg					360 lbs 163 kg		
		2420 lbs 1 097 kg			2360 lbs 1 071 kg					2320 lbs 1 053 kg		
		2580 lbs 1 171 kg			2500 lbs 1 133 kg					2430 lbs 1 103 kg		

Deductions for Jib From Main Boom Capacities




Stowed Jib  
Erected Jib (Retracted)  
Erected Jib (Extended)





# FULLY EXTENDED OUTRIGGER SPREAD: MODEL 50110S

## 32 FT RETRACTED JIB LIFTING CAPACITIES

	0° offset					15° offset					30° offset				
Load Radius	Loaded Boom Angle	Code 7		Code 8		Loaded Boom Angle	Code 9		Code 10		Loaded Boom Angle	Code 11		Code 12	
		Over Rear		Full 360°			Over Rear		Full 360°			Over Rear		Full 360°	
Feet <i>Meters</i>		lb	kg	lb	kg		lb	kg	lb	kg		lb	kg	lb	kg
40 <i>12,19</i>	74.5	7300	<i>3 311</i>	7300	<i>3 311</i>										
45 <i>13,72</i>	72.5	7300	<i>3 311</i>	7300	<i>3 311</i>										
50 <i>15,24</i>	70.5	7300	<i>3 311</i>	7300	<i>3 311</i>	73.5	6500	<i>2 948</i>	6500	<i>2 948</i>					
55 <i>16,76</i>	68.5	6980	<i>3 166</i>	6980	<i>3 166</i>	71.5	6500	<i>2 948</i>	6500	<i>2 948</i>	74	5800	<i>2 630</i>	5800	<i>2 630</i>
60 <i>18,29</i>	66.5	6600	<i>2 993</i>	6600	<i>2 993</i>	69.5	6120	<i>2 775</i>	6120	<i>2 775</i>	72	5750	<i>2 608</i>	5750	<i>2 608</i>
65 <i>19,81</i>	64	6230	<i>2 825</i>	6230	<i>2 825</i>	67	5780	<i>2 621</i>	5780	<i>2 621</i>	69.5	5450	<i>2 472</i>	5450	<i>2 472</i>
70 <i>21,34</i>	62	5870	<i>2 662</i>	5280	<i>2 394</i>	65	5450	<i>2 472</i>	5450	<i>2 472</i>	67	5160	<i>2 340</i>	5160	<i>2 340</i>
75 <i>22,86</i>	59.5	5530	<i>2 508</i>	4480	<i>2 032</i>	62.5	5160	<i>2 340</i>	4890	<i>2 218</i>	64.5	4900	<i>2 222</i>	4900	<i>2 222</i>
80 <i>24,38</i>	57	5110	<i>2 317</i>	3800	<i>1 723</i>	60	4880	<i>2 213</i>	4170	<i>1 891</i>	62	4670	<i>2 118</i>	4470	<i>2 027</i>
85 <i>25,91</i>	54.5	4690	<i>2 127</i>	3200	<i>1 451</i>	57.5	4630	<i>2 100</i>	3530	<i>1 601</i>	59.5	4450	<i>2 018</i>	3800	<i>1 723</i>
90 <i>27,43</i>	52	4280	<i>1 941</i>	2690	<i>1 220</i>	54.5	4400	<i>1 995</i>	2980	<i>1 351</i>	56.5	4250	<i>1 927</i>	3210	<i>1 456</i>
95 <i>28,96</i>	49	3740	<i>1 696</i>	2230	<i>1 011</i>	51.5	4000	<i>1 814</i>	2500	<i>1 133</i>	53.5	4070	<i>1 846</i>	2700	<i>1 224</i>
100 <i>30,48</i>	46	3260	<i>1 478</i>	1830	<i>830</i>	48.5	3490	<i>1 583</i>	2060	<i>934</i>	50.5	3660	<i>1 660</i>	2230	<i>1 011</i>
105 <i>32,00</i>	43	2830	<i>1 283</i>	1470	<i>666</i>	45.5	3030	<i>1 374</i>	1670	<i>757</i>	47	3170	<i>1 437</i>	1810	<i>821</i>
110 <i>33,53</i>	39.5	2440	<i>1 106</i>	1140	<i>517</i>	42	2620	<i>1 188</i>	1320	<i>598</i>	43.5	2730	<i>1 238</i>	1440	<i>653</i>
115 <i>35,05</i>	35.5	2090	<i>948</i>	850	<i>385</i>	38	2240	<i>1 016</i>	1000	<i>453</i>	39	2330	<i>1 056</i>	1090	<i>494</i>
120 <i>36,58</i>	31.5	1770	<i>802</i>			34	1890	<i>857</i>			34.5	1950	<i>884</i>	760	<i>344</i>
125 <i>38,10</i>	26.5	1480	<i>671</i>			29	1570	<i>712</i>			29	1600	<i>725</i>		
130 <i>39,62</i>	20.5	1210	<i>548</i>			22	1270	<i>576</i>			20	1250	<i>566</i>		
135 <i>41,15</i>	10	950	<i>430</i>												

# FULLY EXTENDED OUTRIGGER SPREAD: MODEL 50110S

## 49 FT EXTENDED JIB LIFTING CAPACITIES

	0° offset						15° offset						30° offset					
Load Radius	Loaded Boom Angle	Code 13		Code 14		Loaded Boom Angle	Code 15		Code 16		Loaded Boom Angle	Code 17		Code 18				
		Over Rear		Full 360°			Over Rear		Full 360°			Over Rear		Full 360°				
Feet <i>Meters</i>	°	lb	kg	lb	kg	°	lb	kg	lb	kg	°	lb	kg	lb	kg			
45 <i>13,72</i>	75	5400	<i>2 449</i>	5400	<i>2 449</i>													
50 <i>15,24</i>	73.5	5400	<i>2 449</i>	5400	<i>2 449</i>													
55 <i>16,76</i>	69.5	5400	<i>2 449</i>	5400	<i>2 449</i>	75	4700	<i>2 131</i>	4700	<i>2 131</i>								
60 <i>18,29</i>	71.5	5400	<i>2 449</i>	5400	<i>2 449</i>	73.5	4480	<i>2 032</i>	4480	<i>2 032</i>								
65 <i>19,81</i>	66	5230	<i>2 372</i>	5230	<i>2 372</i>	71.5	4280	<i>1 941</i>	4280	<i>1 941</i>	75	3520	<i>1 596</i>	3520	<i>1 596</i>			
70 <i>21,34</i>	64	4930	<i>2 236</i>	4930	<i>2 236</i>	69.5	4100	<i>1 859</i>	4100	<i>1 859</i>	73.5	3410	<i>1 546</i>	3410	<i>1 546</i>			
75 <i>22,86</i>	62	4660	<i>2 113</i>	4660	<i>2 113</i>	67.5	3940	<i>1 787</i>	3940	<i>1 787</i>	71	3310	<i>1 501</i>	3310	<i>1 501</i>			
80 <i>24,38</i>	68	4410	<i>2 000</i>	4410	<i>2 000</i>	65.5	3790	<i>1 719</i>	3790	<i>1 719</i>	69	3210	<i>1 456</i>	3210	<i>1 456</i>			
85 <i>25,91</i>	60	4170	<i>1 891</i>	3810	<i>1 728</i>	63.5	3650	<i>1 655</i>	3650	<i>1 655</i>	67	3130	<i>1 419</i>	3130	<i>1 419</i>			
90 <i>27,43</i>	45.5	3950	<i>1 791</i>	3290	<i>1 492</i>	61.5	3520	<i>1 596</i>	3520	<i>1 596</i>	64.5	3050	<i>1 383</i>	3050	<i>1 383</i>			
95 <i>28,96</i>	36	3750	<i>1 700</i>	2820	<i>1 279</i>	59	3400	<i>1 542</i>	3250	<i>1 474</i>	62	2980	<i>1 351</i>	2980	<i>1 351</i>			
100 <i>30,48</i>	39.5	3560	<i>1 614</i>	2420	<i>1 097</i>	57	3290	<i>1 492</i>	2800	<i>1 270</i>	59.5	2910	<i>1 319</i>	2910	<i>1 319</i>			
105 <i>32,00</i>	42.5	3380	<i>1 533</i>	2050	<i>929</i>	54.5	3190	<i>1 446</i>	2400	<i>1 088</i>	57	2860	<i>1 297</i>	2680	<i>1 215</i>			
110 <i>33,53</i>	55.5	3010	<i>1 365</i>	1720	<i>780</i>	52	3050	<i>1 383</i>	2030	<i>920</i>	54.5	2810	<i>1 274</i>	2280	<i>1 034</i>			
115 <i>35,05</i>	53	2660	<i>1 206</i>	1420	<i>644</i>	49	2920	<i>1 324</i>	1700	<i>771</i>	51.5	2760	<i>1 251</i>	1920	<i>870</i>			
120 <i>36,58</i>	50.5	2330	<i>1 056</i>	1150	<i>521</i>	46	2580	<i>1 170</i>	1400	<i>636</i>	48.5	2730	<i>1 238</i>	1580	<i>716</i>			
125 <i>38,10</i>	48	2040	<i>925</i>	910	<i>412</i>	43	2260	<i>1 025</i>	1130	<i>512</i>	45	2400	<i>1 088</i>	1280	<i>580</i>			
130 <i>39,62</i>	57.5	1770	<i>802</i>			39.5	1960	<i>889</i>	870	<i>394</i>	41	2070	<i>938</i>	990	<i>449</i>			
135 <i>41,15</i>	32	1520	<i>689</i>			35.5	1680	<i>762</i>			36.5	1760	<i>798</i>					
140 <i>42,68</i>	28	1290	<i>585</i>			31	1410	<i>639</i>			31	1460	<i>662</i>					
145 <i>44,20</i>	22.5	1070	<i>485</i>			25	1160	<i>526</i>										
150 <i>45,72</i>	15	870	<i>394</i>			15.5	910	<i>412</i>										



## **UPTime is the Manitex commitment to complete support of thousands of units working every day.**

### ***UPTime***

- Includes 24-7-365 parts assistance.
- Utilizes the efficiency of the Manitex Online Parts Search and Order System.
- Relies on Manitex's UPTrak support tracking system for performance analysis and resource allocation.
- Features REMan, Manitex's cost effective rebuild/exchange program.
- Provides expert service technicians for troubleshooting and site visits.
- Mandates training; at our facility and yours. It includes coordinated support from all component suppliers.
- Involves every Manitex team member in the support of every Manitex customer.

### **What does UPTime mean to Manitex customers?**

**UPTime** means reliability.  
**UPTime** means utilization.  
**UPTime** means profitability.



Manitex  
3000 South Austin Avenue  
Georgetown, TX, USA 78626  
Telephone 512-942-3000  
Facsimile 512-863-3776  
www.manitex.com

MTX-5002-GUIDE-EN-V4-0109